

C-30 S

NORTHWEST & LUXURY EDITIONS



SPECIFICATIONS

- Length overall (rigged) 35' 8" | 10.87 m
- Draft 29" | 0.74 m
- Beam 10' | 3.05 m
- Bridge clearance (mast down) 9' 9" | 2.97 m
- Height on trailer (estimated) 13' 2" | 4.01 m
- Length on trailer (estimated) 40' 2" | 12.24 m
- Fuel capacity 180 US gal | 681.4 L
- Water capacity 60 US gal | 227.1 L
- Waste capacity 40 US gal | 151.4 L
- Weight, dry 10,200 lbs | 4,626 kg
- Engine Volvo D6, 440 HP common rail diesel engine

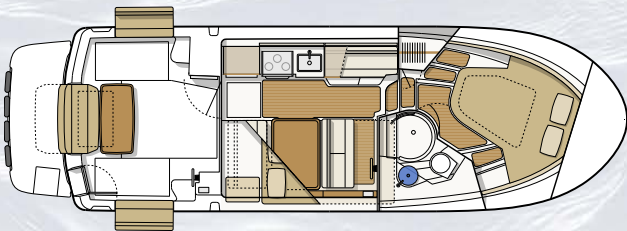


The flagship of the Cutwater fleet of fast, efficient family cruisers brings onboard livability, luxury and convenience to a whole new level... and adds more than a few unexpected innovations. With its generous 10-foot beam, the hull provides plenty of volume for stretch-out comfort on deck and below, and our trademark Stepped Keel hull design places the engine lower than conventional hull forms allow, to ensure exceptional stability, as well as extra headroom in all living spaces.

The aft cockpit features an ingenious convertible seating arrangement, including side bench seats that fold outward from each hullside to accommodate four adults without taking up cockpit space; another double seat, built into the transom, may be adjusted to face forward or aft. Another great feature of the Cutwater 30 is an opening panel in the cabin bulkhead that allows the aft dinette seat to be reversed in order to accommodate two more guests in an enjoyable setting that's ideal for al fresco socializing. On the foredeck, two flush hatches open to reveal a pair of cushioned observation seats, each with a footwell that doubles as fender storage. For swimmers and beachcombers, the bow platform features a telescoping five-step ladder that extends to allow easy access to and from the beach or the water.

An expanse of opening windows brightens the roomy main-deck salon. Here, a four-place dinette converts to a double berth, and features a beautifully finished custom maple pedestal table with integral beverage holders and grab rail. A European-style galley counter with under-counter fridge spans the full length of the salon's port side, and opens for access to a double stainless-steel sink and electric cooktop. Just opposite is the fully instrumented helm station featuring a handsome double-stitched ultraleather console and double-wide helm seat. Beneath the raised dinette is a private guest cabin with gear storage, reading lamp, two hullside portlights and a 6' 8" double berth.

With its efficient 440-hp Volvo diesel inboard, the Cutwater 30 cruises effortlessly and comfortably, delivering express service to even remote destinations; standard bow and stern thrusters ensure precise maneuvering and easy docking. For its performance, economy and comfort, no other cruiser can offer this kind of value.



MODEL FEATURES

DUAL GARMIN CHARTPLOTTERS & XHD RADAR

Navigation is fun and accurate with dual Garmin touchscreen chartplotters (8612xsv & 8612), equipped with GPS, sonar, and xHD radar. Easily monitor fuel flow, engine data, bottom conditions, GPS location, tides and much more.

FULL GALLEY

The C-30 S is well equipped with a full galley for extended cruising. Meal prep is a fun and easy with a refrigerator/freezer, large stainless sink with hot/cold water, a wine/water cooler and a stainless propane stove and oven combination or electric cooktop with convection microwave oven.

MULTI-USE SEATING

The aft bulkhead window opens, and dinette seat transforms to create a rear facing seat. Our sunset seat and expanding gunwale seats comprise the social cockpit layout capable of hosting up to 7 adults.

ADVANCED CUTWATER HULL

By aerating the running surface and reducing friction, the C-30 Sedan's stepped hull provides significant performance and efficiency gains. The low shaft angle and robust keel are a hallmark of our inboard design, increasing efficiency and protecting the propeller.

LUXURIOUS FORWARD STATEROOM

The forward stateroom is your resort destination, where, right outside your door, the scenery is always changing. You'll feel fully at home with a memory foam island bed, flatscreen TV, Bluetooth Fusion stereo, opening hatches, closet, cabinetry, folding table and RGB LED accent lighting.

TRAILERABLE 10FT BEAM

The 10' beam of the C-30 S allows for a spacious, functional interior while maintaining the ability to trailer your boat to remote and inland destinations. Trailering also provides more options for storing your boat when not in use.

STANDARD FEATURES

PERFORMANCE

440 HP Volvo D6 diesel inboard

Electric trim tabs

Stepped hull

Bow and stern thrusters

Thruster wireless remote

Trailerable - 10' beam

ACCOMMODATIONS & INTERIOR COMFORT

Air conditioning (Luxury edition)

Cabin drink holders, 4

Cabin heater (engine)

Curtains for privacy

Dinette (seats 4) converts to bed

Fully enclosed head

Fusion stereo system (multi-zone)

Hatches, pilothouse roof, solar reflective, 4

Hatches, stateroom, 2

Heater (NW: diesel, Luxury: AC reverse cycle)

Indirect cabin lighting

Island bed

LED lighting

Electric marine toilet w/ holding tank, pump out

Memory foam mattress

Midship stateroom

Opening portlights, 7

Private forward stateroom

Shower with enclosure

Storage under mattress

TV in salon

TV in stateroom

DECK FEATURES

Anchor package, 22 lb, 50' chain, 200' line

Bow beaching ladder, stainless steel

Bow lounge seating, 3

Bow pulpit

EVA foam traction decking

Folding stainless steel mast for trailering

Bolded items: High value features included in the price of the Cutwater C-30 S. Other manufacturers oftentimes list these features as options with an additional cost.

Forward line storage

Rocket launchers, 6

Rod holders, 2

Sport racks, stainless steel

Swimming ladder, stainless steel

Swim step, with built-in fenders

Washdown system

Windlass, bow and helm controls

COCKPIT

Cockpit cover, hard-top w/ hatches and lights

Cockpit drink holders, 6

Cockpit refrigerator

Cockpit seating, 7+

Cockpit sink

Cockpit table

Downrigger plugs and pads (NW edition)

Fold-out gunwale seating

Opening glass bulkhead w/ reversible seat

Powered engine hatch

Reversible sunset seat

Transom entry door for boarding

HELM

AIS receiving

Color engine display

Digital fuel flow data

Electronic shift and throttle control, single lever

Garmin autopilot

Garmin 8612xsv navigation system w/ GPS and sonar

Garmin radar, xHD

Helm drink holders, 2

Helm seat, double

USB charging ports

Windshield wipers, 2

GALLEY

Galley cabinets, 3

Galley drawers, 2

Microwave

Oven (NW: propane, Luxury: convection/oven combo)

Refrigerator/freezer

Sink with hot and cold water

Stove top (NW: propane, Luxury: electric)

Wine/water cooler

MECHANICAL & ELECTRICAL

AC electrical panel

Batteries

Battery charger

DC electrical panel

Generator, diesel (Luxury edition)

Inverter

Macerator discharge

Shore power cord(s)

Solar panel, 175w with controller

Underwater lights

SAFETY

Carbon monoxide detectors

Courtesy lights

Electric horn

Illuminated compass

Navigation lights

Safety kit: fenders, lines, flares, fire ext, first aid kit, life jackets, boat hook

Spotlight with remote

Swim platform rails

VHF radio, DSC capable

Window defrosters

CONSTRUCTION

Bonded electrical system

Foam-filled fiberglass stringer grid system

Seawater strainer(s)

Self bailing cockpit

Stainless steel cleats, rails, hardware

Vinylester barrier coat

ADDITIONAL FACTORY OPTIONS

- Aft cockpit bimini top with boot
- Aft cockpit sun and sunset shades
- Aft steering, second station w/ electronic controls
- Cockpit freezer (in lieu of cockpit refrigerator)
- Dinghy, inflatable RIB 290 CSM hypalon with Weaver davits, stand-off & winch
- Downrigger plugs and pads (LE only, included in NW Edition)
- Factory Delivery Experience
- Garmin GXM Weather Antenna
- Hull color upgrade (from standard White)
- Low speed module
- Rocket launchers, arch with rod holders (6)
- Volvo Five Year Extended Coverage



CUTWATER C-30 S PACKAGES

The Cutwater C-30 S is sold fully equipped and ready to cruise with an expansive selection of premium features and outfitted in one of two packages:

NORTHWEST EDITION

Most commonly used in colder climates where air conditioning would not be necessary. Equipped with diesel forced air heater, downrigger plugs & pads, and propane stove & oven.

LUXURY EDITION

Most commonly used in warmer climates where air conditioning is a must. Equipped with air conditioning/ reverse cycle heating, convection oven & microwave combo, diesel generator w/ sound shield, and electric stovetop.

SCAN CODE FOR PRICING AND SPECIFICATIONS




CUTWATER

47 37th st NE
Auburn, WA, 98002

253-839-5213

www.CutwaterBoats.com

Options, freight & taxes extra.
Prices, specifications, equipment, and options may change without notice. Information on this sheet should not be used for navigation. 0323

